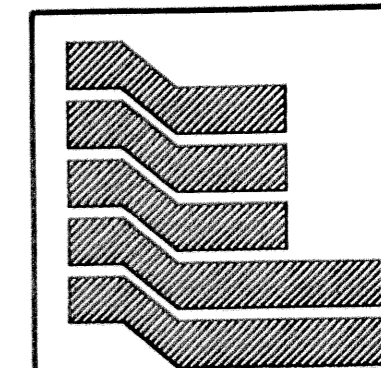
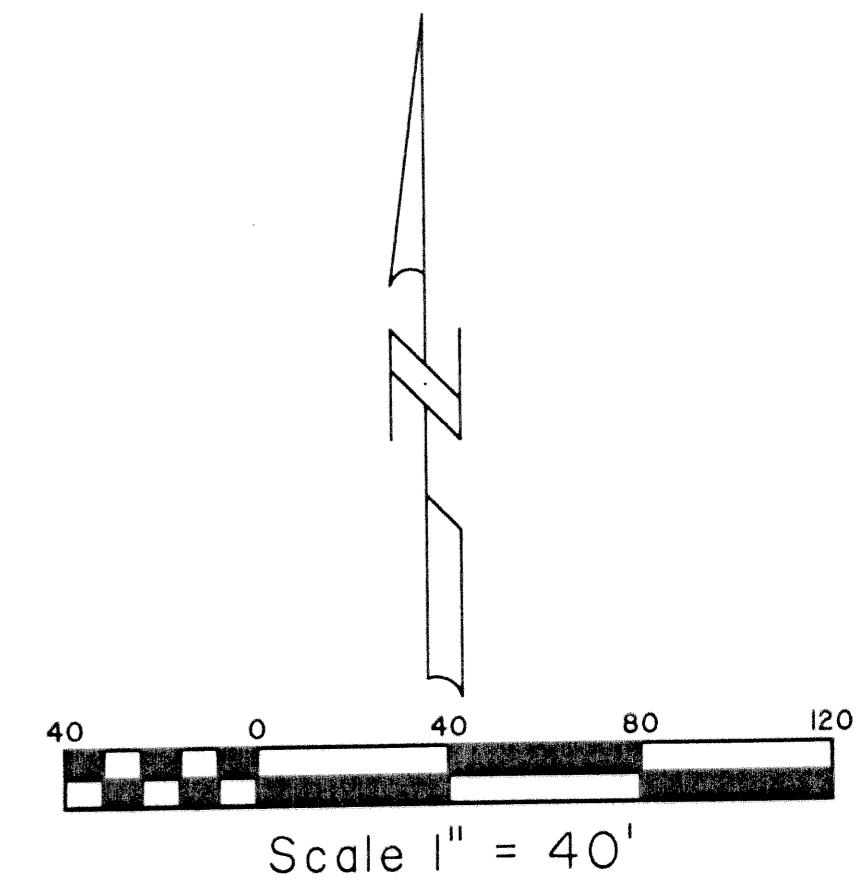
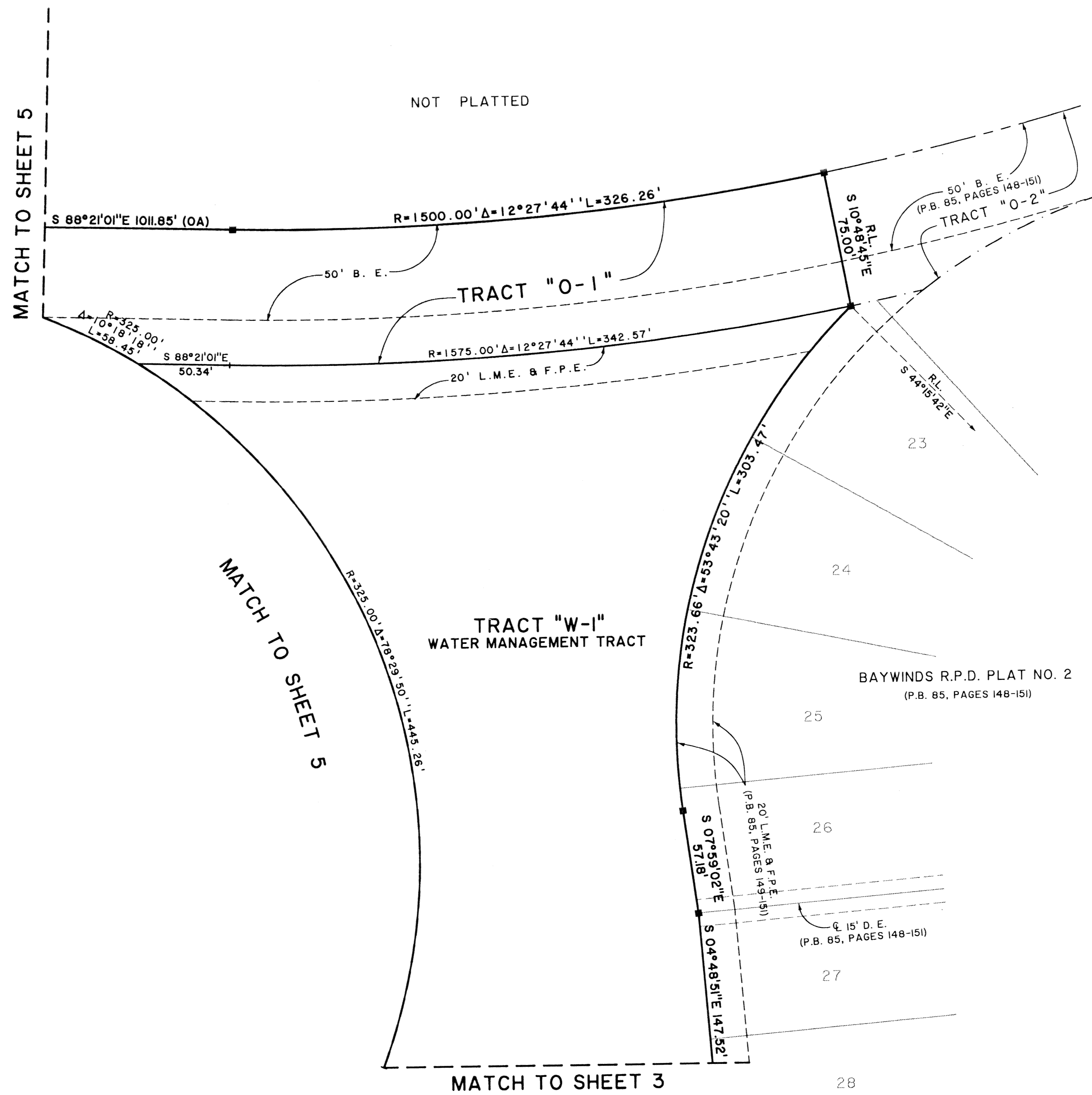
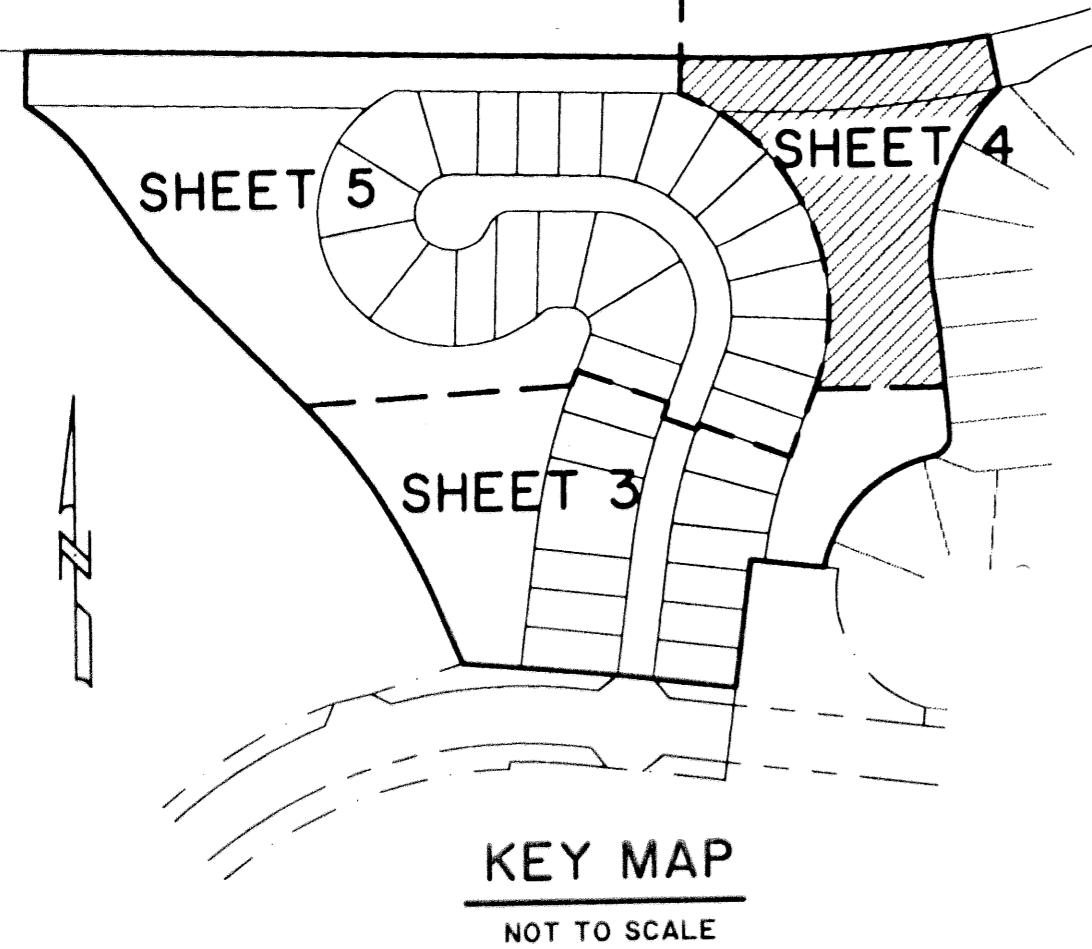


BAYWINDS R.P.D. PLAT NO. 11

LYING IN SECTION 19, TOWNSHIP 43 SOUTH, RANGE 42 EAST,
CITY OF WEST PALM BEACH, PALM BEACH COUNTY, FLORIDA.
SHEET 4 OF 5

STATE OF FLORIDA SS
COUNTY OF PALM BEACH
THIS PLAT WAS FILED FOR RECORD AT _____
____ M. THIS ____ DAY OF _____ 2003
AND DULY RECORDED IN PLAT BOOK NO. ____
ON PAGE _____
DOROTHY H. WILKEN,
CLERK OF THE CIRCUIT COURT
BY _____ D.C.



Landmark Surveying & Mapping Inc.
1850 Forest Hill Boulevard
Ph. (561) 433-5405 Suite 100 W.P.B. Florida
LB # 4396

BAYWINDS R.P.D. PLAT NO. 11
(TRACT "G")